

# MARINE SAFETY

EMSA SUPPORT SERVICES

Brussels, 09/12/2009

## Introduction - Objectives

Within the fields of maritime safety, pollution prevention from ships and ship security, EMSA has the following main operational objectives:

- To ensure the proper implementation of EU maritime legislation
- To foster technical cooperation and development and disseminate best practice
- To provide technical advice to the Commission and MS
- To provide operational capabilities, in particular to top up Member State's capabilities for oil pollution response

## **COMMUNICATION ON THE ARCTIC/**

### **POLICY OBJECTIVE NUM.2: PROTECTING AND PRESERVING THE ARCTIC.**

#### **2.1 Proposals for action**

##### **-SUPPORT SCREENING AND MONITORING OF CHEMICALS IN THE ARCTIC:**

**-Safe Sea Net**

##### **-PURSUE COOPERATION ON PREVENTION, PREPAREDNESS AND DISASTER RESPONSE:**

**-CleanSeaNet**

**-Oil Recovery Vessels**

**-MSS**

## 1. SafeSeaNet

- **Ground network** of European shore-based AIS stations receiving automatic radio messages from ships (on board AIS) and Maritime Reporting Systems (MRS)
- Port and HAZMAT notifications
- Information about incidents or accidents

4

### Legal basis

- Vessel Traffic Monitoring Directive 2009/17/EC

## SSN LEGAL BACKGROUND (Dir. 2002/59)

Member States shall receive notifications that shall forward to the SSN

Port notifications

Article 4 of Directive 2002/59

Hazmat notifications

Article 13 of Directive 2002/59

Ship (MRS&AIS) notifications

Article 9 of Directive 2002/59

Alert notifications

Article 16 of Directive 2002/59

SSN entered in Full Operational Phase on 1/1/09

All notifications have a common part (IMO, MMSI, Call Sign and Name) plus additional information as required by the Directives.

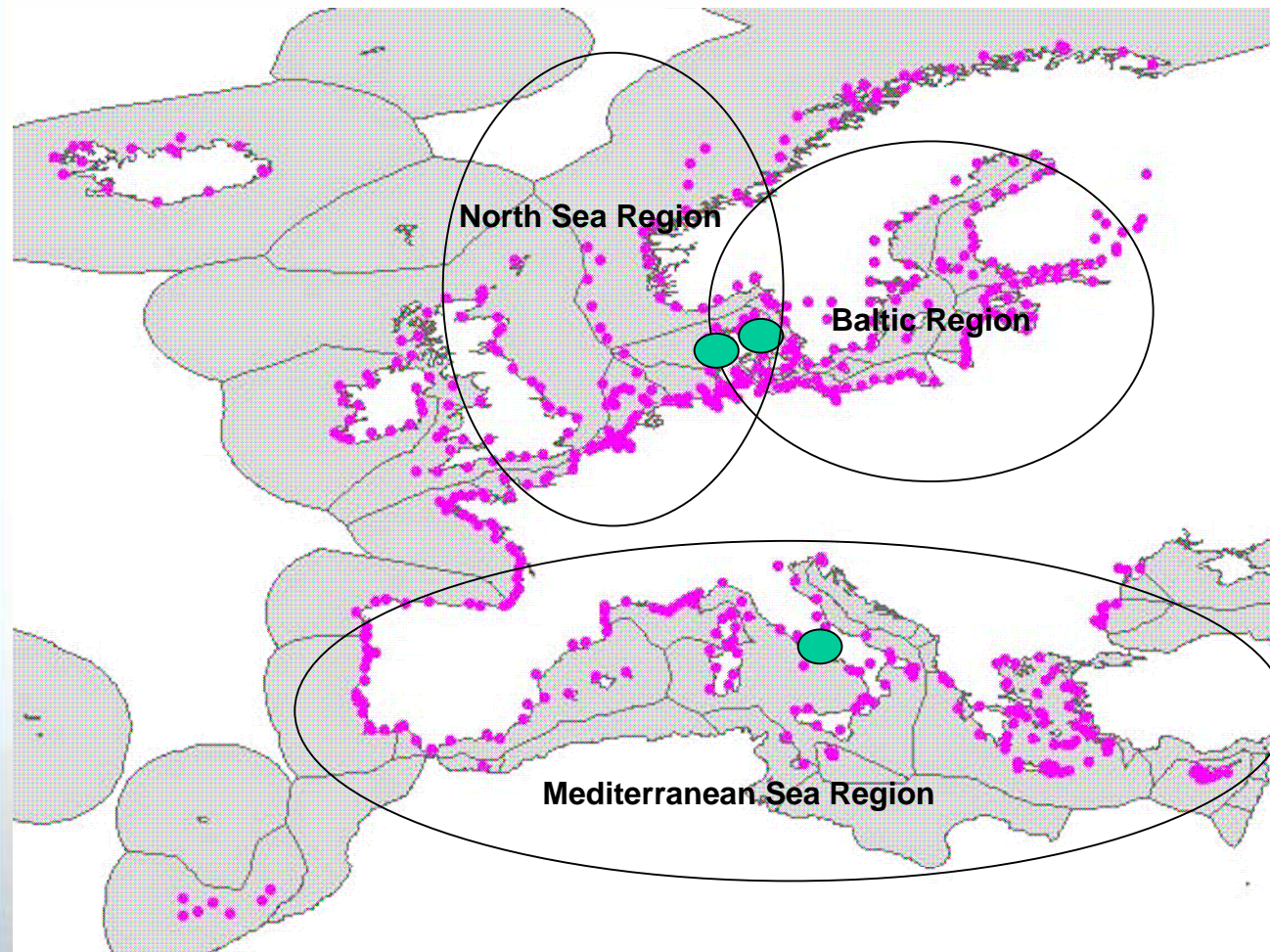
## SafeSeaNet information sources

### Data providers

- **AIS** : on board AIS and shore based networks
- **Masters /owners/ agents** : port and HAZMAT notifications
- **Local authorities (LCA)** : VTS, MRCC, Port authorities, Coast guards, Pollution survey centres for incidents or accidents



## Map of AIS shore stations



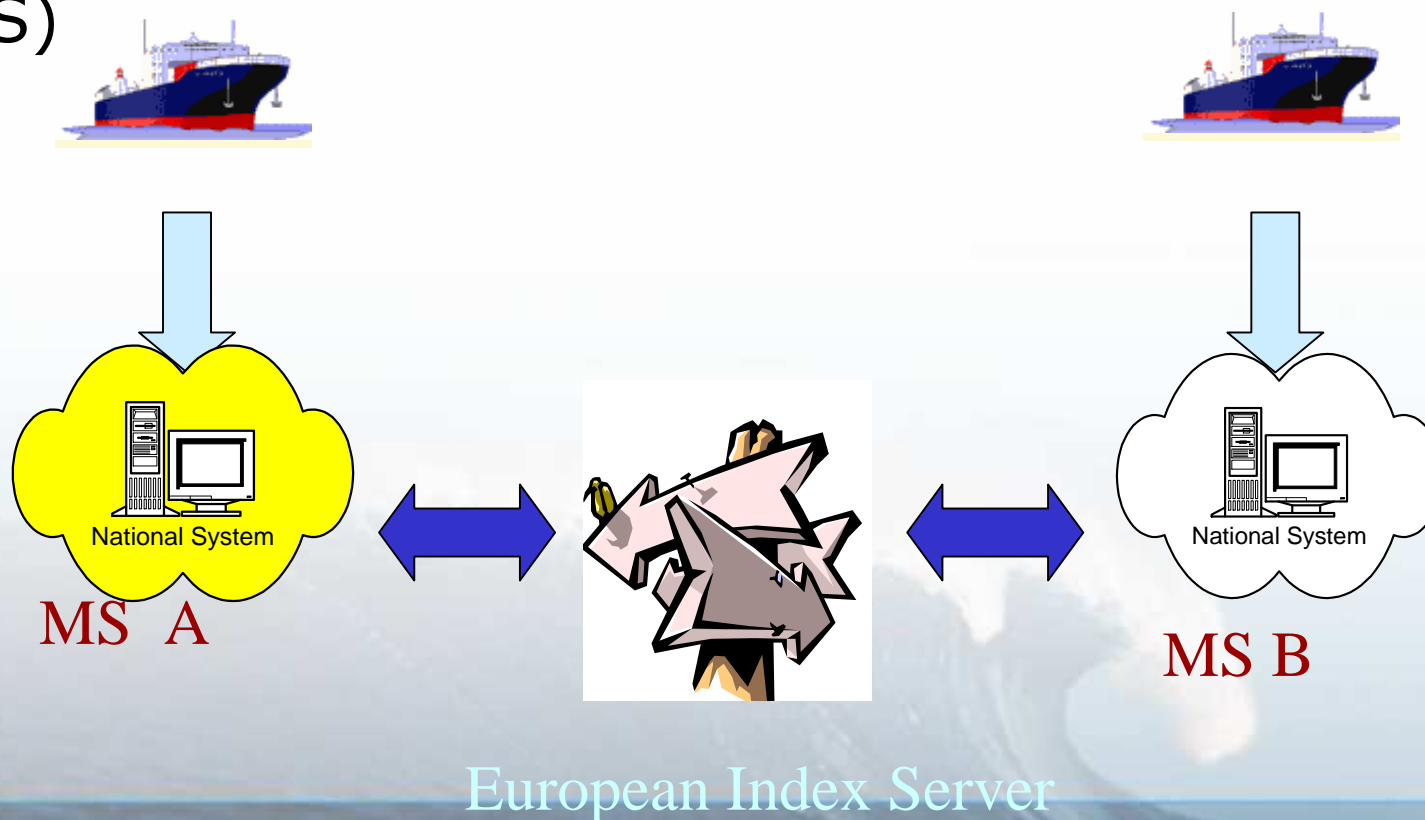
**727 AIS  
shore  
stations**

**Coastal  
coverage in  
all Member  
States**

**EU: one of  
the best  
monitored  
maritime  
regions**

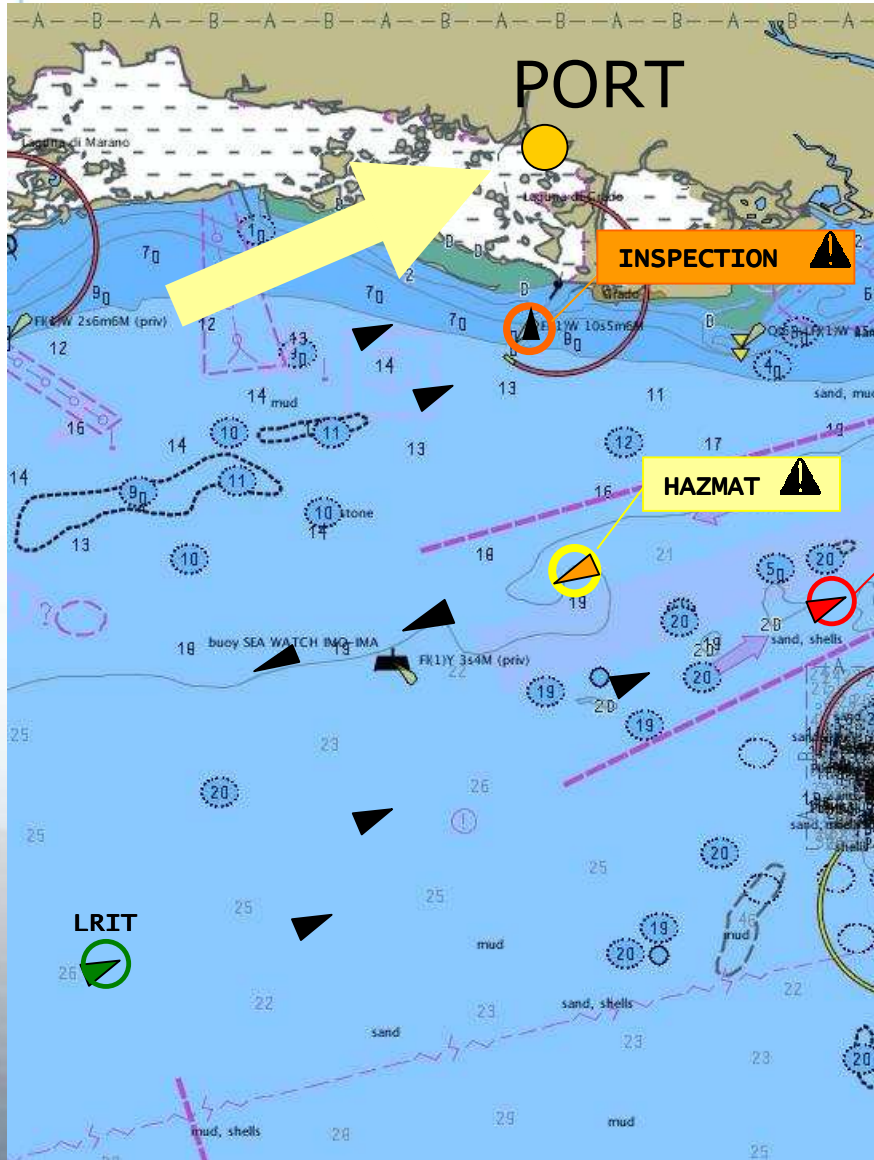
## SafeSeaNet current system

Relay network organised at European level between systems of Member States: European Index Server (EIS)



> List of inspections for ship IMO : 9021667

Name during insp.	Date of insp.	Port of inspection	State of inspection	Type of inspection	De
FEZZANO	26/03/2004	Ambes	France	Initial inspection	
FEZZANO	03/11/2005	Nantes-Saint Nazaire	France	Expanded inspection	



Imo	Mmsi	Ship Name	Type	ETA	Created On
<a href="#">9222273</a>		CMA CGM BALZAC	Hazmat	2008-01-11 16:00:00	2008-01-08 14:57:32
<a href="#">9283289</a>		MAERSK PROGRESS	Hazmat	2008-01-11 16:00:00	2008-01-10 12:14:34
<a href="#">9243382</a>		MIRO D	Hazmat	2008-01-11 16:00:00	2008-01-10 14:39:18
<a href="#">9993168</a>		GOETLAND	Hazmat	2008-01-11 16:00:00	2008-01-11 09:59:46
<a href="#">9155418</a>		OPDR SEVILLA	Hazmat	2008-01-11 16:00:00	2008-01-11 10:16:46

iled inspection
iled inspection
iled inspection
iled inspection
iled inspection
iled inspection

> Ship related messages for IMO : 9021667

Date of message : 10/05/2007  
 State : France  
 Format message : PSCO Report  
 Text : The vessel will leave Montoir with only one radar available. The next port be Gibraltar for bunkering. This is the last time permitted to repair the X

PSC Organisation	Authority	Port of inspection	Date of report	Detention	Duration (days)	Number of deficiencies
Paris MoU	Latvia	Ventspils	2007-06-11	N	0	
Paris MoU	France	Nantes	2007-05-10	N	0	3
Paris MoU	France	Le havre	2006-12-26	N	0	6
Paris MoU	France	Bordeaux	2006-10-18	N	0	7
Paris MoU	France	Nantes	2006-02-15	N	0	
Paris MoU	France	Bordeaux	2006-01-18	N	0	12

2007-10-26 10:54:26	PLGDY	2007-10-15 19:50:42	2007-10-16 05:50:42	99999
Sent At	Next Port of Call	ETA To Port	ETD From Port	Passengers
2007-10-25 07:06:27	PLGDY	2007-10-15 19:50:42	2007-10-16 05:50:42	99999
Sent At	Next Port of Call	ETA To Port	ETD From Port	Passengers
2007-10-30 14:29:36	NLRM	2007-10-31 00:00:00	2007-10-31 14:20:12	99999

## **2. POLLUTION DETECTION/PREVENTION AND RESPONSE**

- CLEAN SEA NET
- OIL RECOVERY FLEET

